

Area-based Coordination Discussion



30 / 04 / 2024

Agenda

| | | |
|---------------------------------|----------------------|--------|
| Intro | Pablo | 5 min |
| Framing the topic | Seki | 15 min |
| Reality check | Francisco | 3 min |
| Ukraine | John | 8 min |
| Türkiye | Ammar | 8 min |
| Open discussion | Participants / Angel | 15 min |
| Challenges | Mamen | 3 min |
| Compilation around 7 main areas | Lala / Adriana | 8 min |
| Open discussion | Participants | 15 min |
| Way forward Survey | Stephanie | 8 min |
| Next steps | | 2 min |

FRAMING THE TOPIC

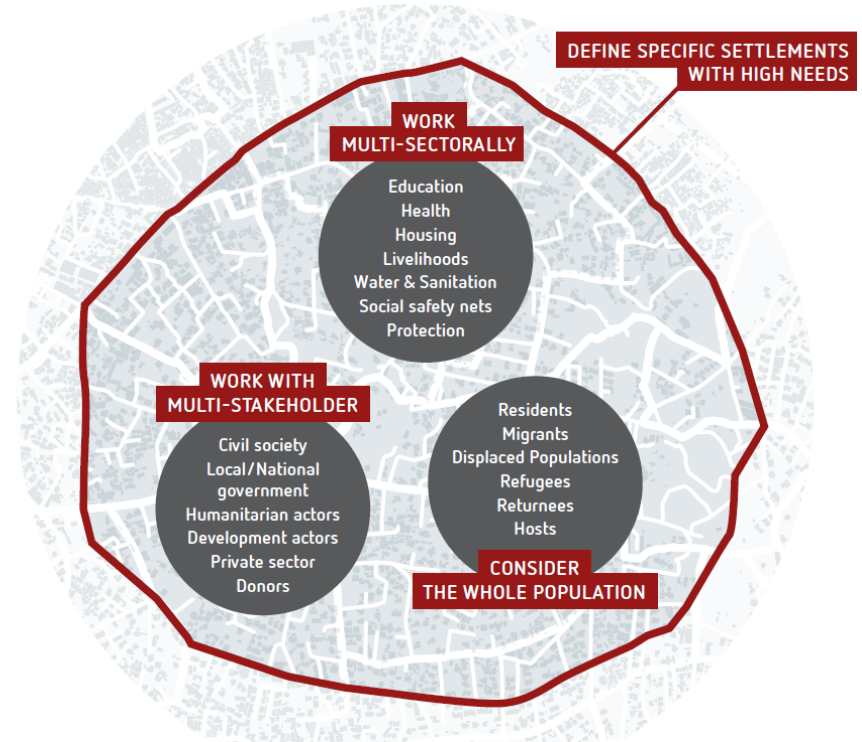
- **Origin – holistic nature of human well-being**
- How the Shelter Cluster has been thinking around this topic
 - Settlements Approach Guidance Note
 - Settlements Approach Compendium of Case Studies
- Presence of ABA and ABC in global frameworks
- Clarification on the terminology

FRAMING THE TOPIC

- Origin – holistic nature of human well-being
- **How the Shelter Cluster has been thinking around this topic**
 - Settlements Approach Guidance Note
 - Settlements Approach Compendium of Case Studies
- Presence of ABA and ABC in global frameworks
- Clarification on the terminology

FOUR CORE CHARACTERISTICS OF THE SETTLEMENTS APPROACH

- It targets specific geographic areas of high needs
- It is multisectoral
- It recognizes and engages with multiple stakeholders
- It considers the whole population



WHEN IS THE SETTLEMENTS APPROACH APPROPRIATE?

The settlements approach can be applied to any settlement intervention activity regardless of context, and in preparedness, response, and recovery phases. Experience shows that some crisis environments are more conducive than others for the settlements approach to bear full success. The compendium of case studies showed that it works best when:

- ▶ the population base is relatively physically stable and not too socially fragmented.
- ▶ the humanitarian coordination architecture does not penetrate to the settlement level.
- ▶ the population has complex and interdependent needs, as is often the case in urban and semi-urban contexts.
- ▶ local authorities are present, credible, willing to partner with international actors, and have a baseline capacity.
- ▶ a multisectoral coordination group or platform, often led or co-led by local authorities, exists, or can be legitimately created.
- ▶ humanitarian and development actors are aware of and committed to supporting resilience, self-sufficiency, localisation, and territorial approaches over the medium term.

KEY BENEFITS OF THE SETTLEMENTS APPROACH

Research by the Urban Settlements Working Group⁸ shows that the settlements approach can benefit the affected population, local stakeholders, and the humanitarian agencies supporting them.

The settlements approach benefits the affected population:



- ▶ Reduces the creation or reinforcement of tensions and inequalities and contribute to improved social cohesion.
- ▶ Generates a collective response that addresses overarching needs.
- ▶ Ensures no key influencers or affected communities are left behind.
- ▶ Addresses the needs of affected groups across multiple sectors and population.



It also benefits local stakeholders:

- ▶ Works with existing governance systems.
- ▶ Accommodates the multisector and multiple stakeholder perspective that local administrations require.
- ▶ Strengthens the capacity of local actors to address the multiple needs associated with humanitarian crisis.
- ▶ Promotes neutrality, impartiality and balances competing issues inherent in a crisis response, thus improving trust between stakeholders.
- ▶ Improves relationships between communities and local governments.





The settlements approach also provides benefits for humanitarian agencies:

- ▶ Allows resources to be better aggregated and allocated to the most affected settlements.
- ▶ Focuses resources on prioritised needs of the communities.
- ▶ Enhances clarity and understanding of how best to provide multisectoral assistance at the local level.
- ▶ Improves communication and complementarity between partners, including humanitarian and development actors and local stakeholders.
- ▶ Enables a quicker adaptation to evolving needs through the creation of an information base that supports evidence-based programming.
- ▶ Anticipates pathways to multisector recovery interventions.

FRAMING THE TOPIC

- Origin – holistic nature of human well-being
- How the Shelter Cluster has been thinking around this topic
 - Settlements Approach Guidance Note
 - Settlements Approach Compendium of Case Studies
- **Presence of ABA and ABC in global frameworks**
- Clarification on the terminology

Independent review of the humanitarian response to internal displacement (2024)

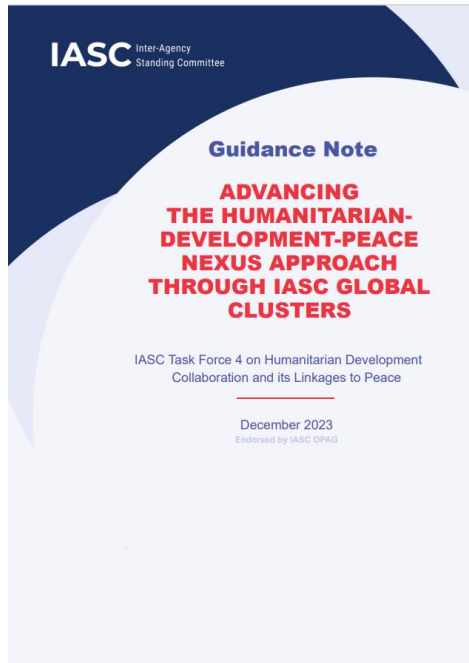


1. "More broadly, experience with area-based approaches suggest that they may serve as effective vehicles for facilitating greater interface between IDPs, host communities, and local or municipal governments."

2. "In several of the case studies, area-based approaches were enabling greater cross-sector collaboration. " (inc. the question on "how ABA intersects with other coordination systems; and who leads/should be the custodian);

3. Need to develop ABA as "alternative option (recommendation 18) to better address the humanitarian needs of urban IDPs"

IASC Guidance Note : Advancing the humanitarian-development-peace nexus approach through IASC global clusters (2023)



1. "Although joined-up programming and implementation do not require processes to be merged or programmes to be implemented together, complementary response efforts, including those anchored in area-based approaches (ABA, see Section 3.3.1) can facilitate successful progress on collective outcomes."

2. (3.3.1) "ABA refers to a focus on a specific geographical area – as opposed to status-based approaches, which focus on specific groups and vulnerabilities. ABAs account for 'system linkages', such as those between housing, infrastructure, services, livelihoods and protection, and must involve communities and local authorities in addition to the forcibly displaced." (see entire paragraph on ABA)

CCCM Position Paper on Area-based approaches (2019/2020)

RESOURCES /

CCCM Position on Area-based Approaches



The purpose of this paper is to set out the CCCM Cluster's position on area-based approaches including operational considerations and opportunities they may have for CCCM actors. Based on earlier desktop publications, recent field experiences, and their documentation, as well as an extensive debate among practitioners, this paper highlights the relevance of CCCM activities and skill sets in applying area-based approaches in humanitarian responses in order to address some of the pertinent challenges in camp-like settings as well as dispersed contexts.

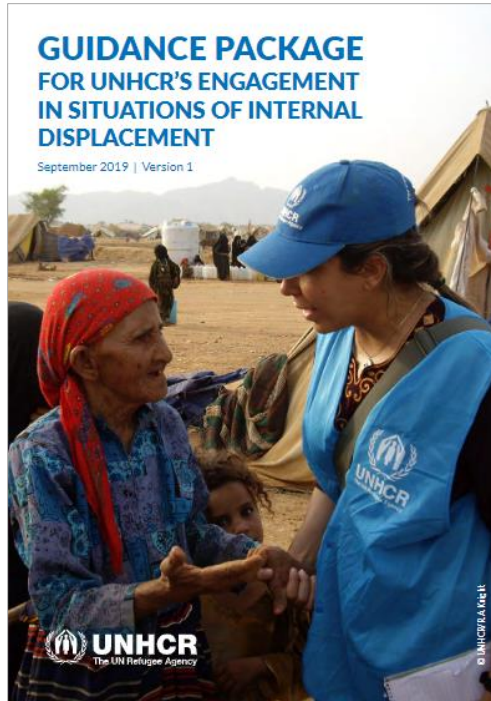
1. "The most widely discussed and agreed upon components that characterise area-based approaches and set them apart from other humanitarian response approaches are:

1. Targeting of specific geographic areas delineated by physical and/or social and/or administrative boundaries with high levels of need – these could vary in scale from small neighborhoods or villages, up to a whole town or city.

2. Active engagement of multiple and diverse stakeholders present in the target area, including local government, civil society, international humanitarian and development actors, the private sector, and the affected communities.

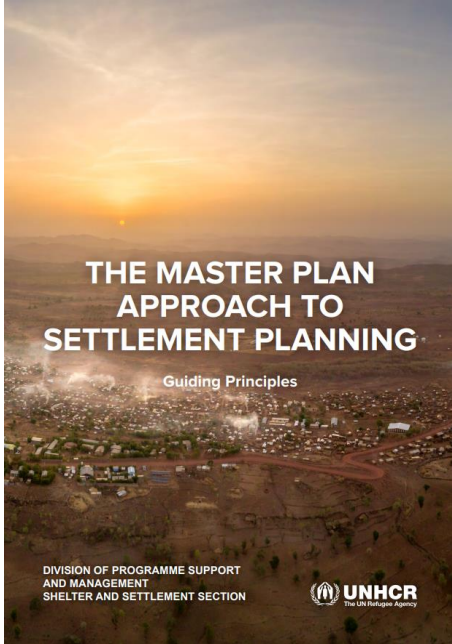
3. Provision of multi-sectoral support that addresses a range of (though not necessarily all) needs with consideration of the whole population of the target area (including all affected people regardless of their legal status, risk category, nationality, etc.). Thereby potentially providing a degree of assistance to the whole population (whether at individual/household levels for the most vulnerable, or at communal levels benefiting most or all individuals residing in the area)."

UNHCR Building Blocks Implementation Planning Tool for IDP Contexts (2020)



1. Reference to UNHCR's Master Plan Approach (see next slide);
2. Chapter on "Area-based Approach: (3.2.)" An important way to ensure inclusion of all relevant population groups in each operational context and leverage available opportunities and resources is to implement area-based approaches and integrated programs which consider the needs and rights of all persons UNHCR works with and for within a geographical area, regardless of status, and utilize the same resources for all. Inclusion of different population groups based upon needs in an area-based approach is contingent upon their physical presence."
3. Also linking ABA to interagency collaboration; integrated programming and advancing "protection and solutions to forced displacement supporting local protection systems. "

The Master Plan Approach (2021)



1. Reference to UNHCR's Master Plan Approach "facilitates the achievement of long-term, area-based, development priorities through the development of humanitarian settlement plans aligned with national development plans and policies – where they exist. "

Using the Sphere Standards in urban settings (2020)



1. " Collaborative programmes, such as area-based approaches (discussed later), are a good example of multi-sectoral programming";
2. "Area-based approaches (ABAs) “provide multisectoral support and include multiple stakeholders, considering the whole population living in a specific geographic area with high levels of need.”
3. "Consider area-based approaches (ABAs) – Long-term reconstruction programmes work well when based on the foundations of good urban planning. ABAs after a disaster apply good practices within the frameworks of urban planning and long-term development.”

ERC Flagship Initiative (2024)



Intro: The four pilot countries spent 2023 reimagining a humanitarian system driven by the priorities of communities and reorientating the humanitarian coordination apparatus accordingly.

1. "With a significant push toward 'area-based' coordination across the sector (and increasing focus on what this might actually mean in practice), it is also important that the Flagship can say something about how this can be implemented practically, the various models emerging, and practical lessons that should be considered."

...

2. in Feb 2024 update: "Area-based, decentralised humanitarian coordination: This area-based coordination fosters stronger collaboration between humanitarian, peace, development, climate change/environment, and migration efforts, opens coordination mechanisms to local government and community organizations and ensures that crisis-affected communities are continuously engaged."

....

Inclusive Coordination: Building an Area-Based Humanitarian Coordination Model (2020)



1. "A reorientation is badly needed: toward a coordination and planning system that is foundationally organized around the needs of frontline aid recipients rather than the global sectors and mandates of the aid agencies that exist to serve them."

2. "A hybrid next-generation coordination and planning architecture, centered around principles borrowed from area-based programming, could retain strengths of the existing coordination architecture while addressing many of its weaknesses."

...

Area-based approaches (different guidance documents) (2016-2022) by the Global Alliance for Urban Crisis

The screenshot displays the 'Resources' page of the Urban Crises Knowledge Hub. The page features a search bar at the top left, a navigation menu with 'HOME', 'ABOUT', and 'RESOURCES' (highlighted in red), and a 'Select Language' dropdown. Below the navigation, the page shows a grid of resource cards. The cards are categorized by type: GUIDANCE, CASE STUDY, EVALUATION, PLAN/POLICY/STRATEGY, and TOOLS/GUIDELINES. The first card is 'GUIDANCE FOR RESPONDING TO DISPLACEMENT IN URBAN AREAS' dated 28 Jul 2023. The second is 'Navigating the Nexus: A Brighter Future for Children in Urban Contexts in Central America' dated 23 Jun 2022. The third is 'The Gaza Resilience Programme: ICRC's urban approach in practice' dated 20 Jun 2022. The fourth is 'Final Evaluation Report: Barrio Resiliente - building resilient cities through resilient neighbourhoods project' dated 19 Apr 2022. The fifth is 'Urban Recovery Framework - Policy Brief March 2022' dated 23 Mar 2022. The sixth is 'Guidance Note: Protocol of Engagement between Local Governments and Humanitarian Actors - Ukrainian version March 2022' dated 01 Mar 2022. The page also includes a search bar, a 'Resource type' filter, and a 'Tags' filter.

23 resources for "area-based approaches", ranging from the "Urban Recovery Framework", to Urban Profiling", the Sphere standards; ...

Ten principles for area-based approaches in urban post-disaster recovery

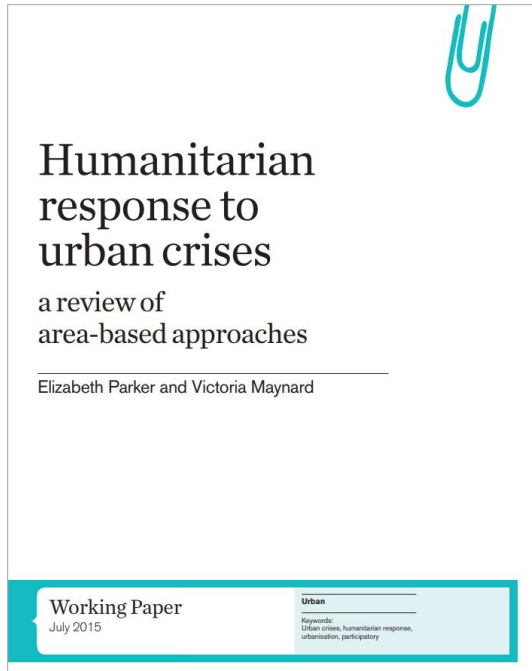


Linkages to GAUC / Global Alliance for Urban Crisis; see above:

1. "ABAs – defined as actions that ‘support people after a disaster in a specific location to transition effectively from relief to recovery’ – have been used in some recent disaster recovery operations to good effect, and a number of organizations have backed the approach".
interesting:

2. "The US Agency for International Development (USAID) (2011) argues that ABAs help to improve clarity and understanding in programming by providing a clear location and set of actors to engage with."

Humanitarian response to urban crises – a review of area-based approaches



1. " this paper proposes that, in an urban context, area-based approaches have three defining characteristics: they are geographically targeted, and adopt a multi-sectoral, participatory approach."

FRAMING THE TOPIC

- Origin – holistic nature of human well-being
- How the Shelter Cluster has been thinking around this topic
 - Settlements Approach Guidance Note
 - Settlements Approach Compendium of Case Studies
- Presence of ABA and ABC in global frameworks
- **Clarification on the terminology**

Programmatic level

■ Area-based Approach

Participatory way of responding to crises

- Targets specific geographic areas of high needs
- Is multisectoral
- Recognizes and engages with multiple stakeholders
- Considers the whole population

■ Settlements Approach

- Same core characteristics than area-based approach
- Nuance: Settlement approach considers socio-cultural boundaries in addition to administrative approach

Coordination level

■ Area-based Coordination

Integration of the area-based logic into the humanitarian coordination architecture with the intention to better align humanitarian action around the expressed needs and aspirations of crisis-affected people.

Questions for the participants

Q1. Is Area-based Coordination present in the country you are working on?

Q2. If answer to Q1 is yes or to some extent: Is the Shelter Cluster actively engaging and collaborating with(in) the ABC structures?

Q3. Has this topic been recently discussed at ICCG level in your country?

Q4. Has this topic been recently discussed by the heads of agencies?

Q5. If answer to Q4 is yes or to some extent: Has your agency been engaged in that discussion?

Q6. If answer to Q4 is yes or to some extent: Have coordinators been included in this discussion?

REALITY CHECK

"Above all, the Grand Bargain is about the need to work together efficiently, transparently and harmoniously with new and existing partners, including the private sector, individuals and non-traditional sources of funding. This requires us to innovate collaborate and adapt mind-sets."

The Grand Bargain | May 2016

A Shared Commitment to Better Serve People in Need



Global Shelter Cluster
ShelterCluster.org
Coordinating Humanitarian Shelter

REALITY CHECK

A photograph of a war-torn street in Ukraine, showing significant destruction of buildings and debris. A person is seen in the distance carrying large bundles of belongings. The scene is characterized by rubble, damaged structures, and a somber atmosphere. A sign with Arabic script is visible on a building to the right.

UKRAINE

REALITY CHECK

TÜRKIYE



How did stepping into a pre-existing ABC structure have challenged your ability to engage and deliver coordination services efficiently?

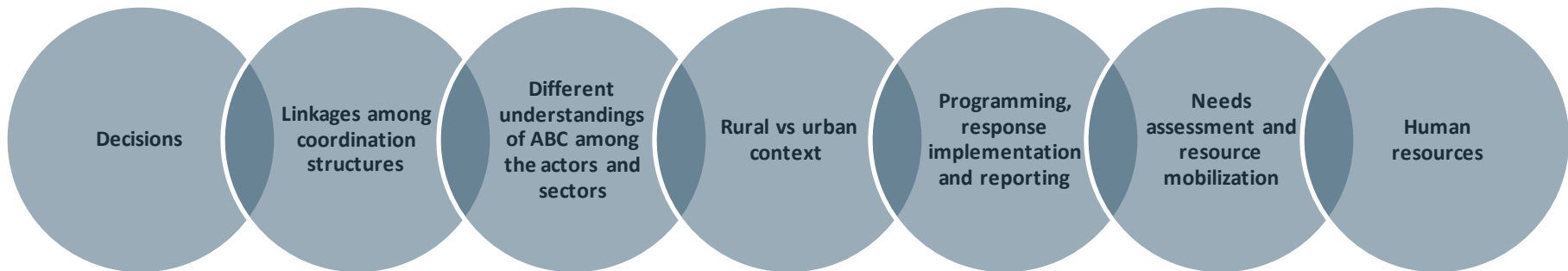
What were the useful aspects and opportunities to improve service delivery while operating within an ABC structure?

If you had the chance to engage in reshaping the cluster approach towards the ABC model in the country you are working, what would you recommend?

Q&A and open discussion

Polls results

CHALLENGES



Top-down vs bottom-up

Effective engagement of local authorities

Definition of the socio-spatial unit

Designation of ABC focal points

Leadership of the ABC

Linkages to preexisting structures

Definition of the type of communication line

ABC connects to ICCG at subnational level?

To each of the clusters? To a subnational

representation of the ICCG? To a different structure?

Are there reporting lines?

Named ABC but not following its principles

Sometimes a way to localize the subnational coordination, but missing the area-based logic

Particular challenges of the rural context in ABC

Who is accountable for the sector technical standards?

Is it needed ABA to have good ABC?

Risk of double reporting from partners to ABC and to clusters

Without the sectorial lenses risk to overlook needs that are not

currently addressed and might not be the topic of discussion if the coordination is too operative

Subsequently, the resource mobilization to address those needs would be more difficult

ABC focal points – Fully dedication to coordination? (ABC demand significant time and resources)

Not always sufficient experience in coordination or a adequate background of local and national actors to ensure the leadership of ABC

Risk of overloading the more efficient resources with more hats → impact in the response

Frequent changes in sectors leadership roles → high turnover rates

A woman wearing a blue headscarf and a blue long-sleeved shirt stands in the doorway of a makeshift shelter. Two young children are standing in front of her. The shelter is made of corrugated metal and fabric. The background shows a rough, outdoor environment.

WAY FORWARD

1. What could be done regarding this topic at global level to support your work? (actions at global level)
2. What could the GSC support team do to support your work regarding this area? (country support actions)
3. How do you propose that we continue collectively advancing in this topic?
4. Would you like to participate in a session dedicated to ABC during the coming Shelter Week?

Polls results

NEXT STEPS

A woman wearing a dark headscarf and a dark jacket stands in the doorway of a makeshift shelter. She is holding a young child in a red top. Another child in a grey shirt and dark pants stands to the left of the doorway. The shelter is constructed from corrugated metal and fabric, with a blue curtain hanging to the left. The background shows a rough, outdoor environment.

- At global level -> Global Cluster Coordinators Group working group on ABC
- At Shelter Cluster level -> Continue with this discussion
 - GSC ST suggestion for discussion: clarification on the accountability for technical standards